

MAESTRO Wi-Fi App



USER MANUAL **ENG**



 **OLIMPIA**
SPLENDID
HOME OF COMFORT

Refer to the User/Maintenance manual for all standards and warnings.

Voir le manuel de l'utilisateur / d'entretien pour toutes les normes et tous les avertissements.

Consulte en el Manual del Usuario o de Mantenimiento todas las normas y advertencias.

CONTENTS

1 - WARNINGS	1
2 - DOWNLOADING AND INSTALLING THE APP	1
3 - APP FUNCTIONS	2
3.a - Homepage.....	2
3.b - Controls Page	3
3.c - Page Settings	5
3.c.1 - Unit settings	6
3.d - Timer Settings	12

1 - WARNINGS

- Not all iOS and Android versions are compatible with the application.
Olimpia Splendid cannot be held liable for any problems due to this incompatibility. The APP is subject to updates without prior notice. Check compatibility with the device's operating system before installing it.



Please keep the APP updated to the latest version.



We cannot be held liable for problems due to internet connections, the Wi-Fi router and smart devices. Please contact the original manufacturer for assistance.

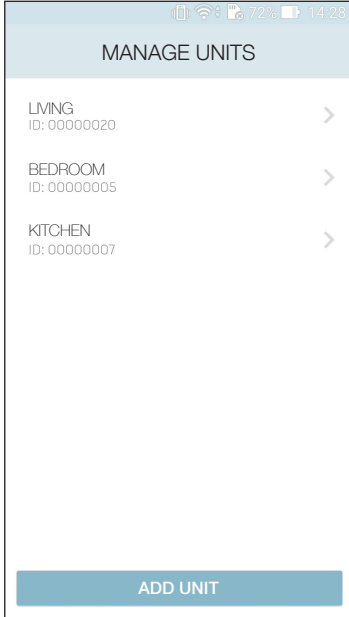
2 - DOWNLOADING AND INSTALLING THE APP

- a. Open either “App Store” or “Google Play”.
- b. Search for “**Olimpia Splendid MAESTRO**” app.
- c. Download the app.

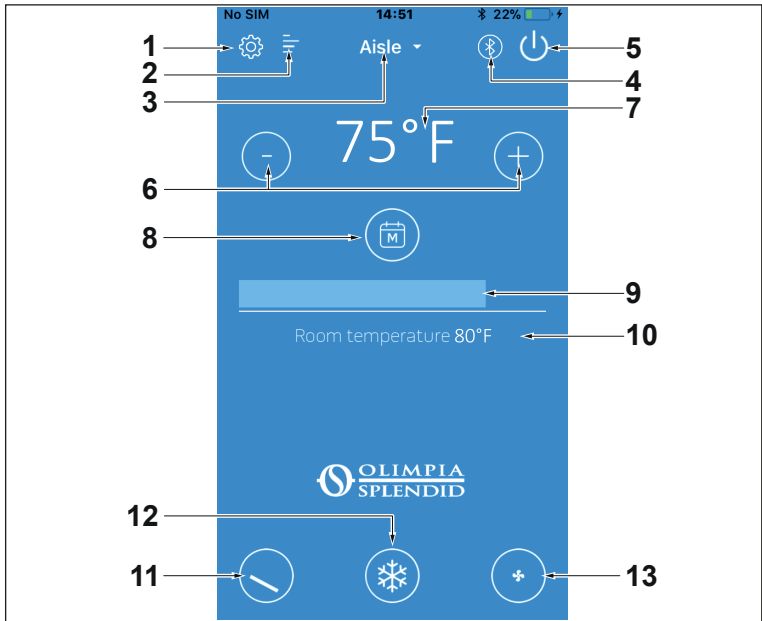
3 - APP FUNCTIONS

3.a - Homepage

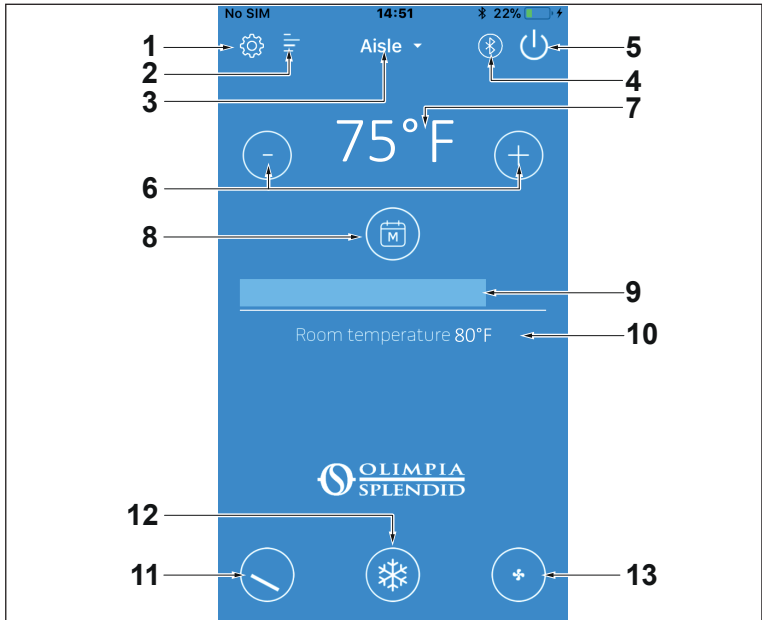
The following page is displayed the first time the app is opened:



3.b - Controls Page



- 1. Select Settings**
Opens the app settings.
- 2. Select Alarm log**
Opens the unit alarm log.
- 3. Select Unit**
Indicates the unit linked to the app and allows the selection of another installed unit.
- 4. Select Communication Channel Indicator**
Displays the communication channel used by the app.
- 5. Select On**
Turns the unit on/off.
- 6. Select Temperature Control**
Sets the desired room temperature.
- 7. Select Set Temperature Indicator**
Displays the room temperature setting.



8. **Select Timer**
Turns the unit timer on/off and open the timer settings.
9. **Select Temperature Control Slide-Bar**
Sets the desired room temperature.
10. **Select Current Room Temperature Indicator**
Displays the room temperature measured by the unit.
11. **Select Direct Air Deflector Control**
Provided option of fixed or oscillating air deflector mode.
12. **Select Mode**
Sets the desired operating mode.
13. **Select Air Speed Selection**
Sets the unit fan speed.

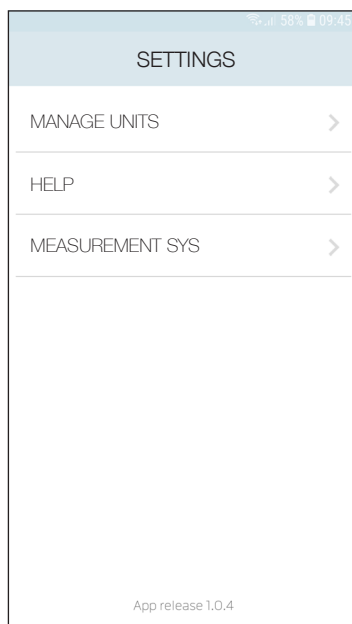
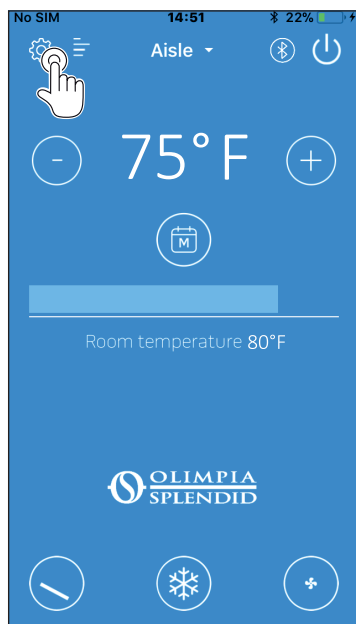


The ability of selecting the desired room temperature and unit fan speed is not available in certain operating modes.

3.c - Page Settings

Press the “SETTINGS” button (1 time) to open

- The “MANAGE UNITS” sub menu
- The online app user guide

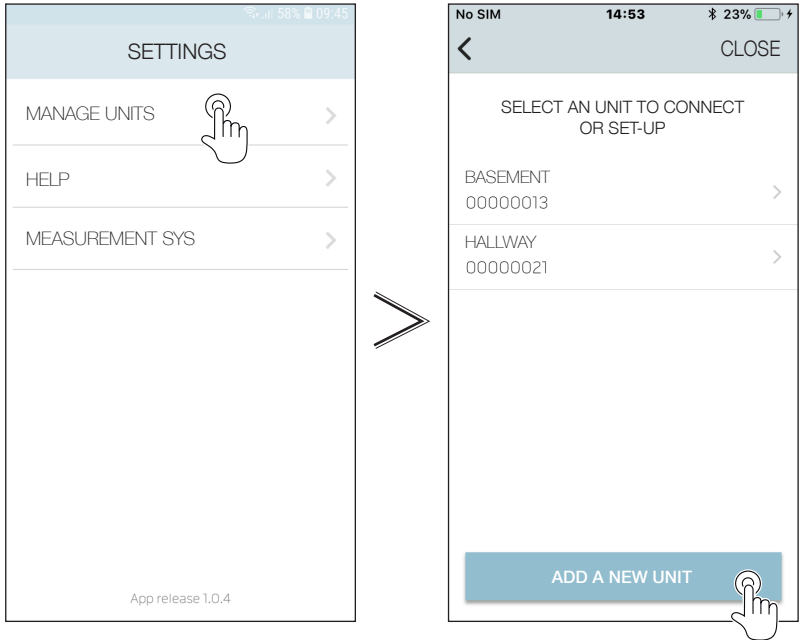


The on-line guide can also be accessed at
www.olimpiasplesniddusa.com

3.c.1 - Unit Settings

Press the “MANAGE UNITS” button to open the “settings” sub menu.

Select “ADD UNIT” to link another unit to the app.



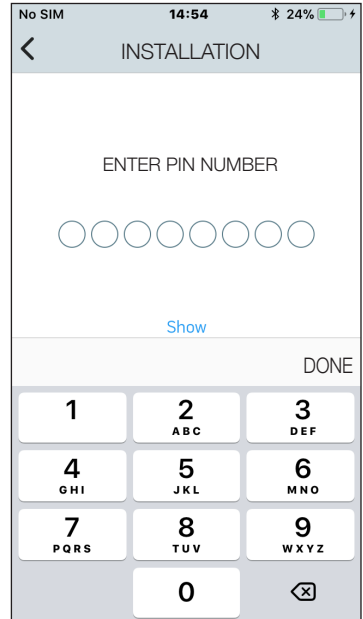
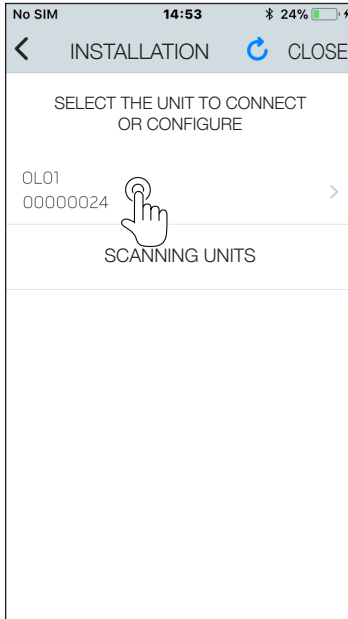
Bluetooth must be enabled on your smartphone within the required communication range to add a unit.

Once the unit has been selected, the “ENTER PIN” page will open.



The pin cannot be altered and is unique to each Wi-Fi kit. Therefore, carefully save it, in case new units need to be added to the app in the future.

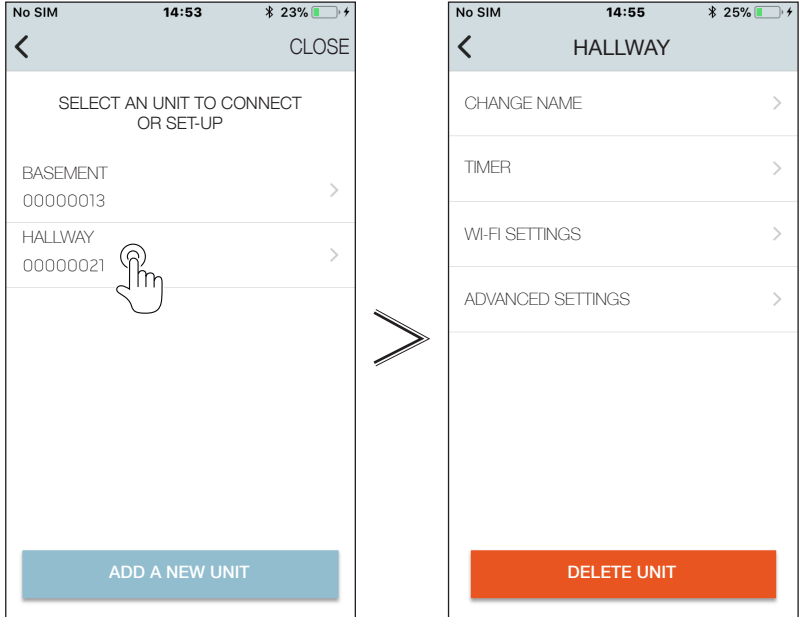
It is recommended to use one of the stickers provided with the Wi-Fi kit and apply it near the unit name plate.



The “Controls Screen” will open after completing the unit registration

Select a single unit to open the following settings:

- Change Name
- Timer
- Wi-Fi Settings
- Advanced

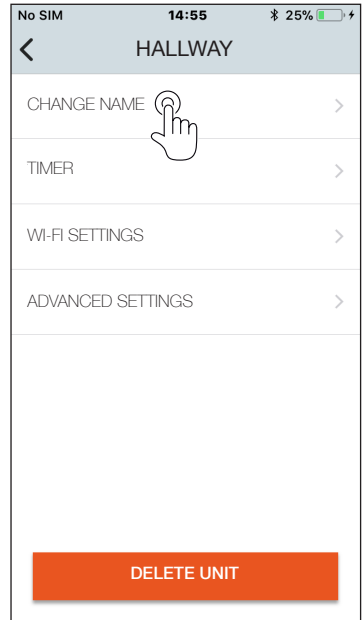


3.c.1.1 - Change Name

Select “CHANGE NAME” to change the name of the unit.



The name can be up to 6 characters long.

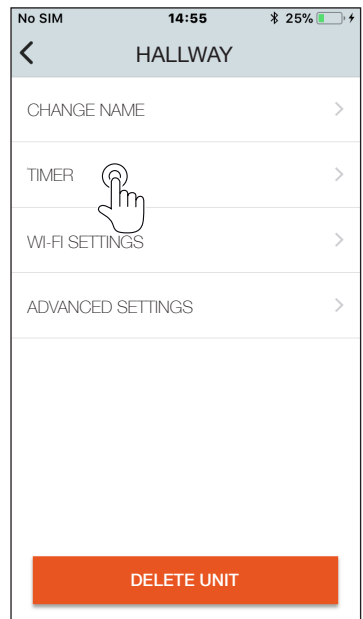


3.c.1.2 - Timer

Select “TIMER” to open the “TIMER SETTINGS” screen.



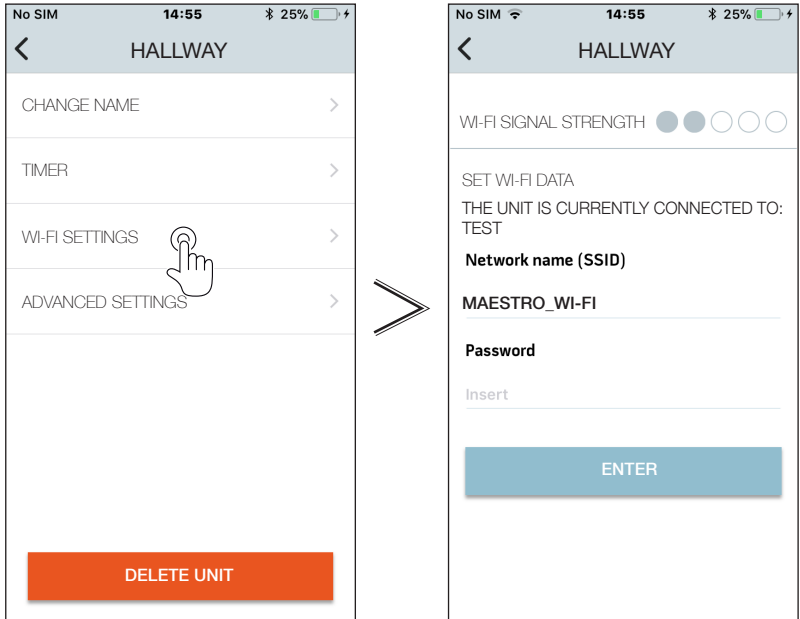
See section 3.d for “TIMER SETTINGS” screen functions.



3.c.1.3 - Wi-Fi Settings

Select "Wi-Fi SETTINGS" to:

- Verify Wi-Fi network signal strength read by the kit installed on the unit
- Set the Wi-Fi network name (SSID) and password to link to the board.



3.c.1.4 - Advanced Settings

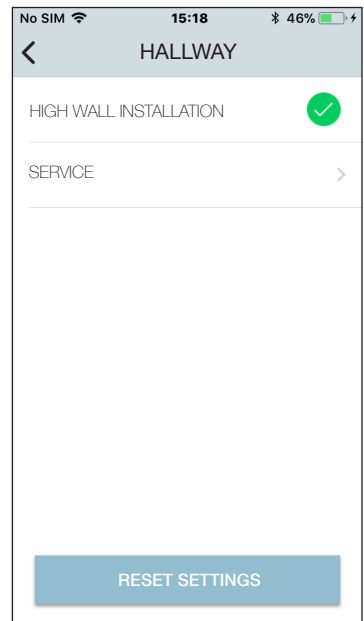
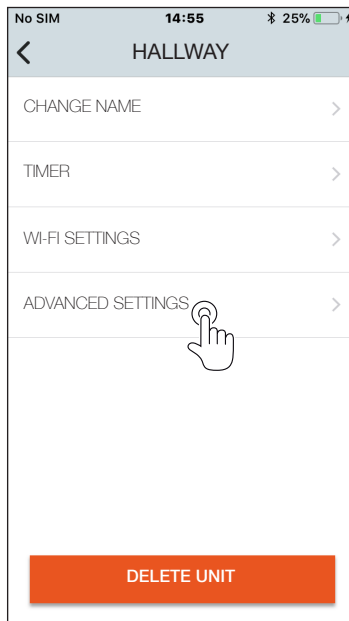
Select “ADVANCED SETTINGS” to:

- Set the unit installation position

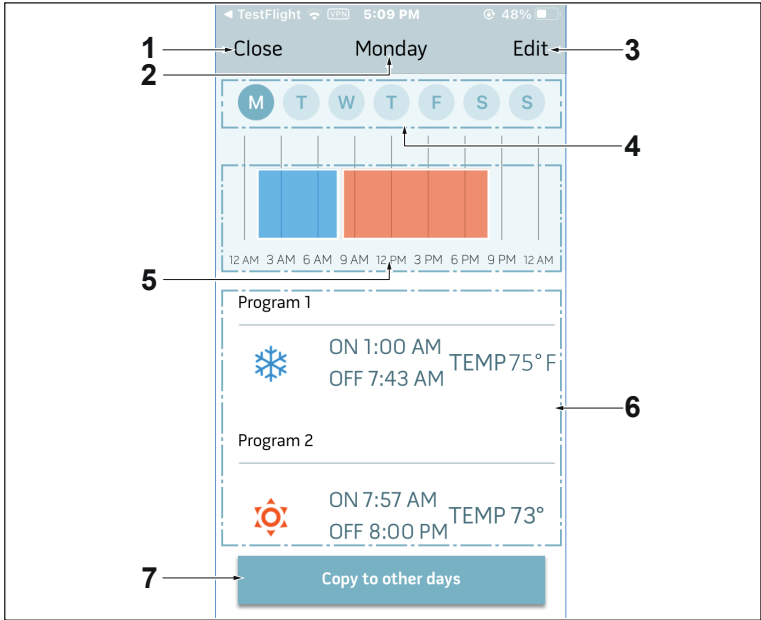


For further details, please refer to the Maestro unit user/ installation manual.

- Open the “SERVICE” page (Olimpia Splendid USA exclusive access)



3.d - Timer Settings



- 1. Select Back/Save**
Confirms settings and returns to the “MANAGE UNIT” page.
- 2. Select Day Indicator**
Displays the selected day of the week.
- 3. Select Edit Settings**
Edits settings page for the selected day of the week.
- 4. Select Day of the Week**
Sets another day of the week.
- 5. Select Time of Day**
Displays the time setting options for the selected day of the week.
- 6. Select Time Range Settings**
Displays selections of the entered time ranges.
- 7. Select Copy Settings**
Copies time selections to other days of the week.

OLIMPIA SPLENDID spa
via Industriale 1/3
25060 Cellatica (BS)
www.olimpiasplendid.it
info@olimpiasplendid.it

OLIMPIA SPLENDID USA, Inc.
66 White Street - 5th floor
New York, NY, 10013, USA
<https://www.olimpiasplendidusa.com/>
customerservice@olimpiasplendidusa.com

I dati tecnici e le caratteristiche estetiche dei prodotti possono subire cambiamenti. Olimpia Splendid si riserva di modificarli in ogni momento senza preavviso.